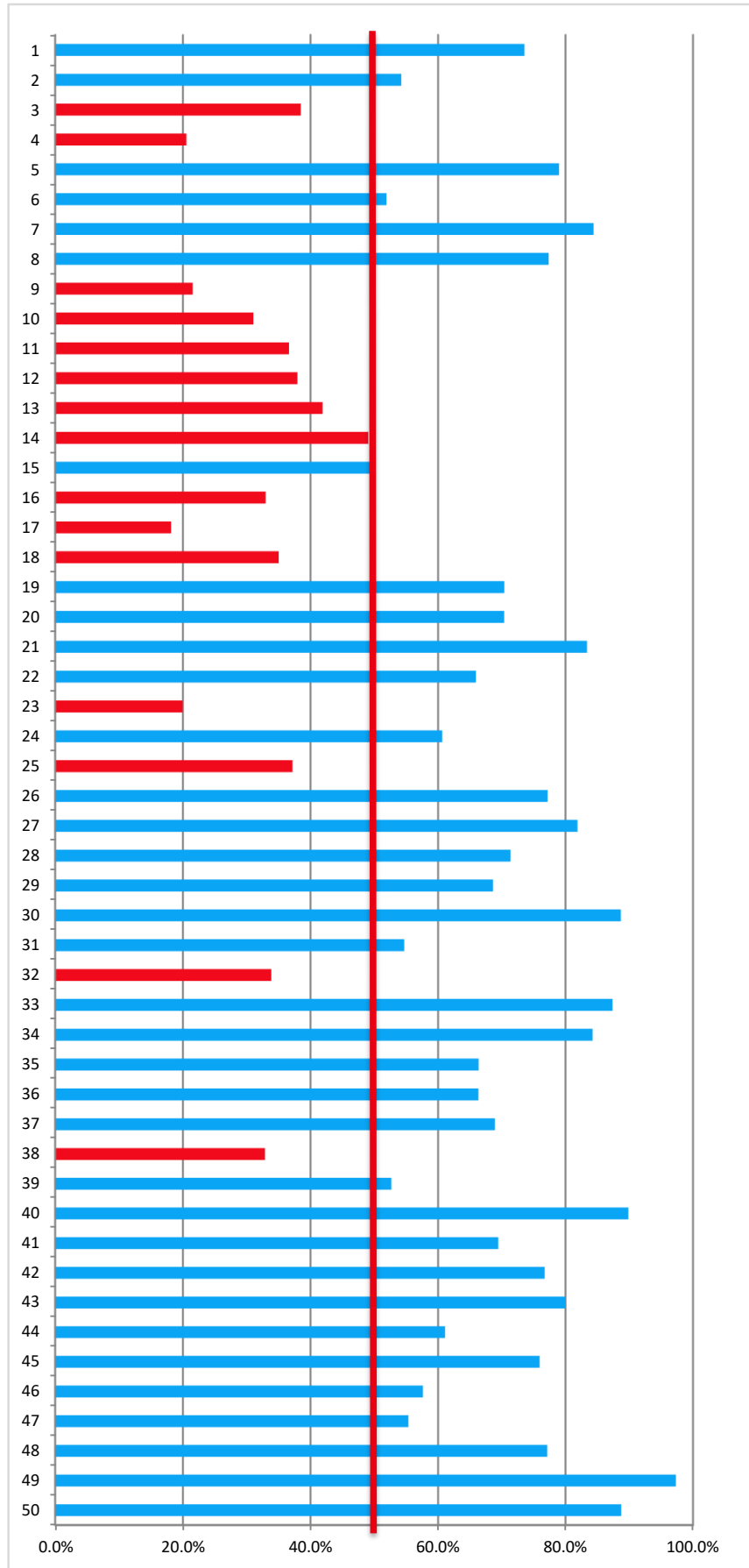


問	正解肢	正答率
1	1	73.5%
2	2	54.2%
3	4	38.5%
4	1	20.5%
5	4	79.0%
6	2	51.9%
7	3	84.4%
8	1	77.3%
9	1	21.5%
10	2	31.0%
11	3	36.6%
12	2	37.9%
13	4	41.9%
14	3	49.0%
15	3	49.8%
16	2	33.0%
17	4	18.2%
18	2	35.0%
19	4	70.4%
20	3	70.4%
21	3	83.4%
22	4	65.9%
23	1	20.0%
24	1	60.7%
25	3	37.2%
26	2	77.2%
27	4	81.9%
28	4	71.4%
29	4	68.6%
30	2	88.7%
31	3	54.7%
32	1	33.8%
33	1	87.4%
34	2	84.2%
35	3	66.4%
36	1	66.3%
37	3	68.9%
38	4	32.9%
39	1	52.7%
40	3	89.9%
41	1	69.5%
42	2	76.7%
43	4	80.0%
44	2	61.1%
45	3	75.9%
46	1	57.6%
47	2	55.3%
48	3	77.1%
49	4	97.3%
50	3	88.7%



※このデータは、日建学院解答速報によるものであり、日建学院生だけでなく、広く一般の方も含みます。